

No Touch & AirSpeed®



WORLD DRYER

Quiet Economical Hand Dryers

No Touch and AirSpeed are the quiet brushless hand dryers, so no need for motor brush replacement. No Touch is an automatic operated hand dryer; Airspeed is a push-button model. Both dryers are designed for sound sensitive areas and washroom solutions for light traffic facilities.

Product Benefits

- Quiet induction motor
- Easy maintenance brushless motor
- No Touch - Automatic
AirSpeed - push-button operation
- Durable and vandal resistant

Design Features

- Tamper resistant screws lock cover securely to base
- Resilient motor mounting rings and factory-lubricated, self-aligning bearings for long motor life
- Dynamically balanced blower wheel for vibration-free running
- Heating element is side-mounted at blower air inlet, designed for maximum heat transfer, with auto shut-off safety features controlled by an internal thermostat
- Motor is shaded pole (brushless) type operating at maximum 3,200 RPM at rated load
- Delivering 120 cubic feet per minute of air volume (5,300 LFM)
- Timer shall be electromechanical cam style with 25 amp rated switch to operate dryer for 30 seconds on push button units



Architecture & Engineering Specifications

AirSpeed™ and No Touch hand dryers shall be manufactured by or for World Dryer Corporation® to include housing of .08" thick die cast aluminum. Front panel shall be in ebony gloss for the NoTouch™ and brushed aluminum for the Airspeed™. Housing to be finished with chrome plating or white epoxy paint. Motor shall be of shaded pole (brushless) type operating at maximum 3,200 RPM at rated load, delivering 120 cubic feet per minute of air volume (5,300 LFM). Timer shall be electromechanical cam style with 25 amp rated switch to operate dryer for 30 seconds on push button units. No Touch dryers shall be activated by means of an infrared emitting/receiving electronic control device. Hand dryers shall be listed under reexamination service of Underwriters Laboratories, Inc.

Electrical specifications:

No Touch & AirSpeed

	110-120 V	208-240 V	220-240 V
Amps	17	8.5	8
Watts	2000	1800 / 2000	1800
Hz	60 Hz	60 Hz	50 Hz

Cover options:

- No Touch** - Cast Aluminum with epoxy paint or chrome
- AirSpeed** - Cast Aluminum with epoxy paint or chrome

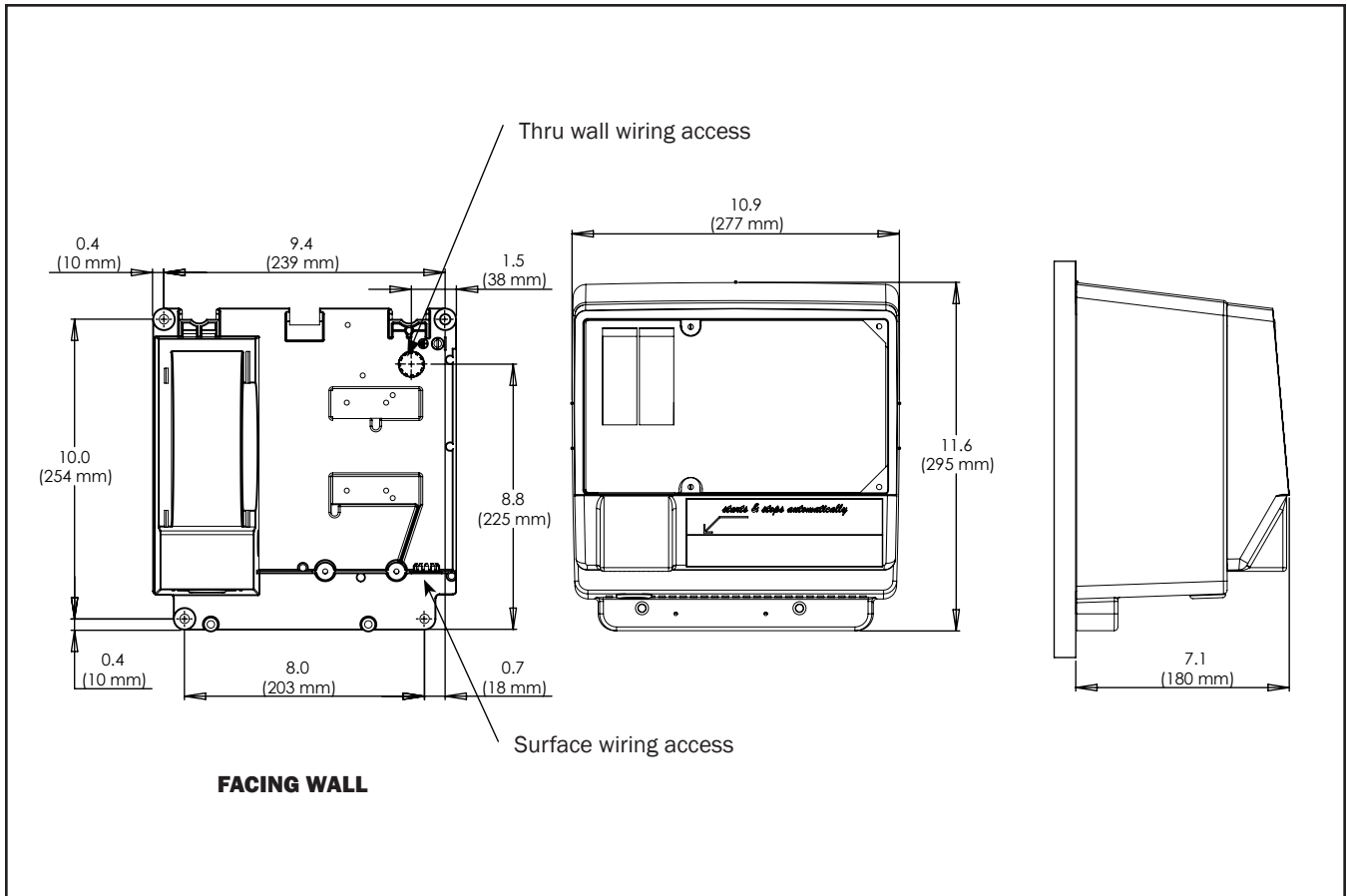
Shipping Weight -

- No Touch** - 15.7 lbs / 7.1 kgs
- AirSpeed** - 15.3 lbs / 6.9 kgs

Shipping Size (HxWxD)-

13" x 12" x 9.3" / 330 mm x 246 mm x 241 mm

110-120 V	208-240 V	220-240 V (export 50 Hz)	Operation	Mounted	Cover Material, Cover Finish	Unit Weight	Unit Size (HxWxD) inch/mm
NT126-005	NT246-005	NT235-005	Automatic	Surface	Aluminum, White body w/ Ebony front panel	14 lbs / 6.4 kgs	10.9" x 11.6" x 7.5" 277 x 295 x 191
NT126-004	NT246-004	NT235-004	Automatic	Surface	Aluminum, Chrome body w/ Ebony front panel	14 lbs / 6.4 kgs	10.9" x 11.6" x 7.5" 277 x 295 x 191
WA126-002	WA246-002	WA235-002	Push-button	Surface	Aluminum, White body w/ Brushed front panel	13.6 lbs / 6.2 kgs	10.9" x 11.6" x 7.5" 277 x 295 x 191
WA126-001	WA246-001	WA235-001	Push-button	Surface	Aluminum, Chrome body w/ Brushed front panel	13.6 lbs / 6.2 kgs	10.9" x 11.6" x 7.5" 277 x 295 x 191



Placement Instruction

- Hand dryers should be spaced at least 2 feet apart, near but not over the wash basin
- In congested areas, dryers should be located to create a flow from wash basin to dryer to exit
- No Touch should be mounted at least 18" above or away from reflective surfaces which may interfere with the automatic sensor operation.
- Dryer Quantity Recommendation:
 Average Traffic: 1 dryer per 2 wash basins
 Heavy Traffic: 1 dryer per wash basin
 Industrial 54" Circular wash fountains: 4 dryers per sink
- Recommended mounting heights from floor to dryer bottom edge

Men's washrooms	46" (117 cm)
Women's washrooms	44" (112 cm)
Children's washrooms, ages 4-7	32" (81 cm)
Children's washrooms, ages 7-10	36" (91 cm)
Children's washrooms, ages 10-13	40" (102 cm)
Children's washrooms, ages 13-17	44" (112 cm)
Handicap Mounting Height	37" (94 cm)

Installation Guide

- No Touch & AirSpeed hand dryers require a dedicated circuit with a maximum rating of 20 amps and must be properly grounded
- GFI circuit protection is recommended
- One side of dryer should be mounted to a stud to minimize noise

Certifications



Warranty



5 year limited warranty



5700 McDermott Drive
 Berkeley, IL 60163 U.S.A.
 800-323-0701
 www.worlddryer.com



92-MT011 Rev01