



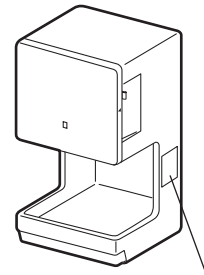
875HJ9801

# Jet Towel Hand dryer

MODEL

## JT-MC106G-W-NA

Unit color -W (White)



Location of Name plate indicating Model name and Electrical ratings

Input Power: 120 Vac Single-phase  
Indoor use only

### INSTRUCTION MANUAL

**For User**

- Read the manual thoroughly before using the unit to ensure it is used safely and correctly. After reading the manual, store it in an easily accessible location for future reference.

**You should not attempt to install the unit yourself, as this may affect the safety and functionality of the unit.**

This unit is intended for the purpose of drying hands and is not covered by a warranty if used for any other purpose. It has no sterilizing or disinfecting functions.

#### INDEX

- Safety Precautions ..... 2
- Names of Parts ..... 3
- How to use the unit ..... 4
  - How to open/close the front cover ..... 4
    - Precautions for when opening/closing the front cover ..... 4
  - If not using for a long period ..... 5
  - How to use the unit ..... 5
  - Turning the heater on ..... 6
- Maintenance ..... 7
  - Precautions for when opening/closing the front cover ..... 7
  - ① Turning the sensor off before maintenance ..... 8
  - ② Cleaning the unit exterior and hand drying area ..... 8
  - ③ Cleaning the air filter ..... 9
  - ④ Emptying and cleaning the drain tank ..... 10
- Trouble shooting ..... 11
- Specifications ..... 12

English

Français

# Safety Precautions

The dangers arising from improper handling and the extents of the dangers are classified and explained as shown below.



## Warning

The following may lead to death or serious personal injury if handled incorrectly.

 Prohibited	<ul style="list-style-type: none"> <li>● Do not install in locations where they may be leakages of combustible gas. This may cause fires.</li> <li>● Do not use at locations where salt damage may occur or where corrosive, neutral or reductive gases are present. The above may cause fire, electric shocks or malfunctions.</li> </ul>	 Do not disassemble	<ul style="list-style-type: none"> <li>● Do not modify or disassemble the unit. Doing so may result in fires, electric shocks or injuries.</li> <li>● When changing the installation place, consult your dealer or installer. There is a risk of injury.</li> </ul>
 Do not use in the baths/shower room.	<ul style="list-style-type: none"> <li>● Do not use in a shower room or other locations with a great deal of humidity in the air or where condensation may form on the unit. This may cause electric shocks or malfunctions.</li> </ul>	 Important ! Follow instructions.	<ul style="list-style-type: none"> <li>● Input Power: 120 Vac Single-phase. Using the incorrect power supply may cause fires, electric shocks or malfunctions.</li> <li>● Use exclusive wiring for the power source. Using this unit with other devices on a branch socket may cause abnormal heat, which may cause fires.</li> </ul>
 Do not allow the unit to get wet.	<ul style="list-style-type: none"> <li>● Do not allow water to get on the unit. This may cause electric shocks or malfunctions.</li> </ul>		



## Caution

The following may lead to injuries or damage to property if the unit is handled incorrectly.

 Prohibited	<ul style="list-style-type: none"> <li>● This unit is not intended for use by young children or infirm persons unless they are adequately supervised by a responsible person to ensure that they can use the unit safely.</li> <li>● Do not let children hang from the unit. Young children should be supervised to ensure that they do not play with the unit.</li> <li>● Do not use for purposes other than drying hands. Inappropriate use may cause an accident.</li> <li>● Do not open the front cover too wide. The front cover may come off, fall and cause injury or damage.                     <ul style="list-style-type: none"> <li>※ The front cover is designed to come off in order to prevent damage if it is opened at a 90° angle or more. (refer to Page 4)</li> </ul> </li> </ul>	 Important ! Follow instructions.	<ul style="list-style-type: none"> <li>● Wear gloves during maintenance work. Not doing so may result in injuries.</li> <li>● Always use the unit with the drain tank, air filter and front cover attached. Any water entering the unit may cause short circuits, electric shocks or damage.</li> <li>● If the unit stops working or if a malfunction occurs, turn off the power switch and ground fault circuit interrupter at the branch circuit to prevent an accident before contacting your dealer for an inspection and repairs. Failure to do any of the above may result in electric shocks or short circuits or fires due to short circuiting.</li> </ul>
----------------	---	---	--

**NOTE**

● Do not use in the following locations.

- Outdoors
- Locations where the temperature could be lower than 32°F (0°C).
- Locations where there is a lot of dust.
- Locations where the temperature could be higher than 104°F (40°C).
- Locations where there is a lot of condensation.
- Locations where salt damage may occur.
- In vehicles (including ships and airplanes)
- Near food or tableware
- Locations where the unit is in direct or strong sunlight (may cause the sensor to malfunction).
- Kitchens (Where there is a risk of water splashing.)
- Locations where the unit may come into direct contact with water.
- Rooms that have a sterilization basin, swimming pools baths.
- Locations where corrosive, neutral, or reductive gasses are present. (This may shorten the working life of the unit and/or cause malfunctions.)

● Do not use with chemicals on your hands.

(This may damage the surface of the unit or cause discoloration or cracking.)

● Please thoroughly wipe off any detergents or chemicals that may be on the unit. Do not use any detergents other than those that have been prescribed.

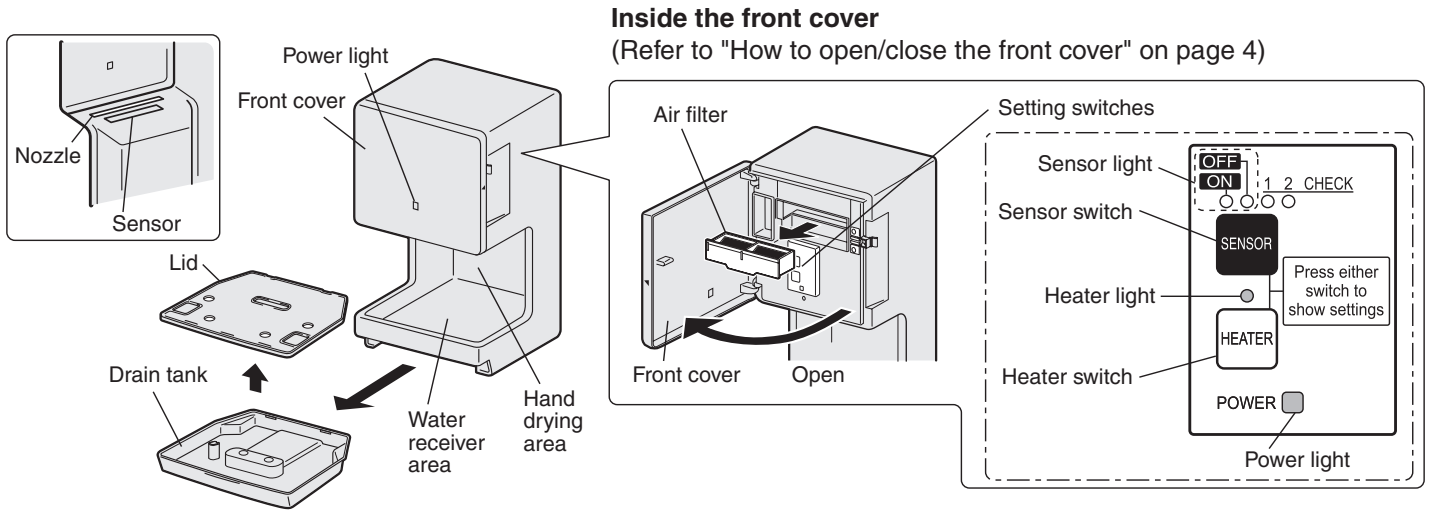
(Failure to do so may damage the surface of the unit, or cause discoloration or cracking.)

Please refer to "Maintenance" (Page 7) for details on detergents.

● If water enters the unit, do not let the air filter or intake area come in close contact with water as this may cause the machine to malfunction or cause the acoustic materials to absorb water and allow bacteria to grow.

# ( Names of Parts )

※ Shaded areas in the figure indicate antibacterial material (excluding outlet nozzle areas).



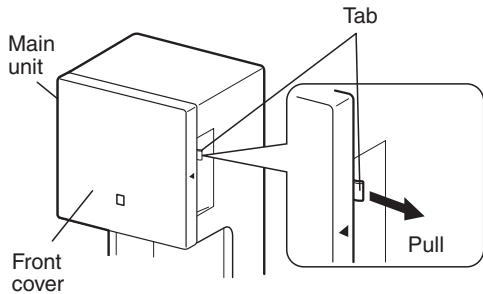
- Please refer to "**Turning the heater on**" (Page 6) while turning the heater on/off.
- Please refer to "**Turning the sensor off before maintenance**" (Page 8) while turning the sensor on/off.

# How to use the unit

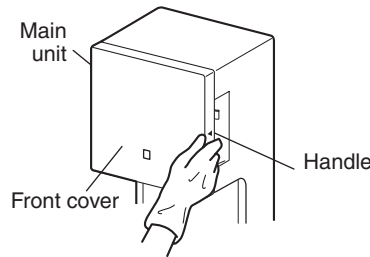
## How to open/close the front cover

### How to open the front cover

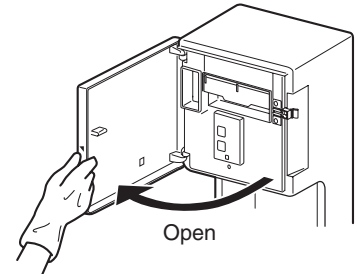
**1 Pull the tab for opening the front cover.**



**2 Hold the handle are on the right hand side of the main unit.**



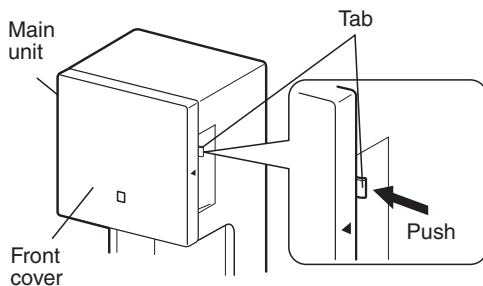
**3 Open.**



### How to close the front cover

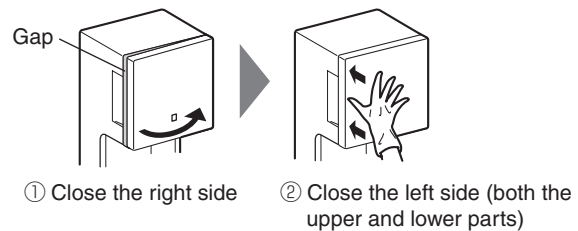
Close the front cover with the procedures for opening it in reverse.

**Close the front cover so that there is no gap between the front cover and the main unit and push the tab in to latch the front cover shut.**



### NOTE

- Check to see that the front cover is fitted securely. Press the front cover on the upper and lower parts against the main unit so that it is securely closed.



### Precautions for when opening/closing the front cover

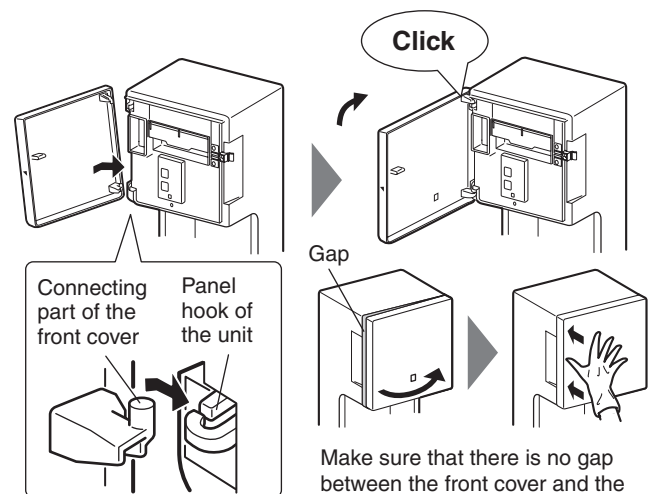
If the front cover comes off, please reattach it with the following procedures.

※ It is designed to come off in order to prevent damage if it is opened too wide.

**1 Press the bottom connecting part of the removed front cover into the bottom panel hook of the unit.**

**2 Press the top connecting part of the front cover into the top panel hook of the unit.**

**3 Check that the front cover is fitted securely.**

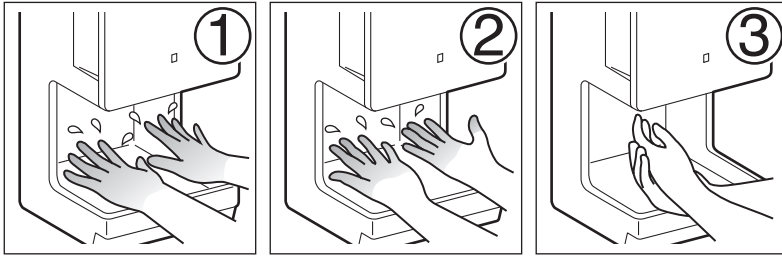


Make sure that there is no gap between the front cover and the unit when the front cover is closed.

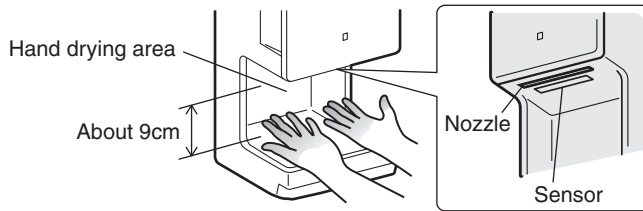
## ■ If not using for a long period

Then turn the breaker off.

## ■ How to use the unit



### Hand detection area



- Please use within the area above.
- ※ The hand detection area may differ depending on the environment.

### Rub your hands together after the water is blown off.

- The dryer starts automatically when your hands enter the hand drying area.
  - ※ Refer to "Hand detection area"

### Caution

- Do not use with disinfectants such as alcohol or chemicals on your hands. (This may damage the unit.)

### Automatic Stop Function

The power light flashes and the dryer stops automatically if the unit is used continually for more than 40 seconds. To continue using the hand dryer, remove your hands, and then re-insert them.

## ■ Turning the heater on

### 1 Open the front cover.

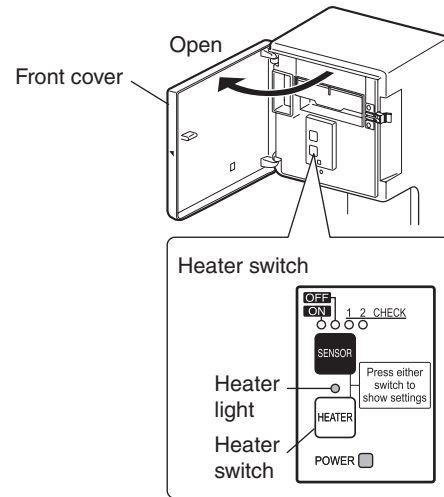
- Refer to "How to open/close the front cover" on page 4.

### 2 Press the heater switch or the sensor switch and let the settings light turn on.

### 3 Turn the heater switch "ON".

※ The heater may not operate during continued use as there is the danger of scalding when the temperature of the warm air rises.

The air may not feel warm when the room temperature is low (68°F (20°C) or below).



#### Checking the settings

The heater light and sensor light turn off after about 10 seconds after their settings are made (to save energy). To check the settings, press either the heater or sensor switch.

#### Simple heater

Softens the feeling of cold air.

If the room temperature is above 80°F (30°C), the heater will stop working to prevent the temperature from rising too high.

- NOTE** ● If the room temperature is less than 64°F (18°C), the air may feel cold.

# Maintenance

## Warning

- **Always turn off the sensor switch during maintenance work.**  
Failure to do so may result in an electric shock.
- **Do not allow water to get on the unit.**  
This may cause electric shocks or malfunctions.

## Caution

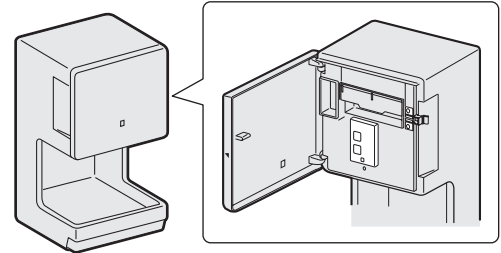
- **Wear gloves during maintenance work.**  
Not doing so may result in injuries.
- **Always turn off the sensor switch during maintenance work.**

### Caution

- **The unit exterior can be cleaned with alcohol, but be sure to wipe off any alcohol that remains after cleaning.**  
(Failure to do so may damage the surface of the unit, or cause discoloration or cracking.)  
※ "Alcohol" means a disinfectant with an ethanol content of 83% or less.  
After wiping the unit clean with alcohol, be sure to dispose of any alcohol that has collected in the drain tank.  
※ Do not spray alcohol directly onto the unit.
- **Do not use any of the following cleaning materials**
  - Solvents such as thinner or benzene
  - Acid, alkaline or chlorine detergents
  - Mold and mildew removers
  - Citrus-based or other plant-based detergents
  - Antiseptics.**Please also refrain from using nylon scourers or abrasives.**  
(They may damage the surface of the unit or cause discoloration or cracking.)
- **Disinfectants cause damage to the unit.**

### NOTE

- **When cleaning the unit, use a neutral detergent. (pH: 6 – 8)**  
(Please do not use plant-based detergents as they may cause damage to plastic parts.)
- **When using a chemical cloth, be sure to follow the instructions carefully.**
- **Factors such as rust may shorten the working life of the unit.**  
(Damage to the unit caused by the use of prohibited agents such as solvents, detergents, and abrasives (also damage due to factors such as rust) is not covered by the warranty.)
- **The area that has undergone antibacterial processing (the shaded area in the right figure) produces antibacterial effects when bacteria adhere to the surface.**  
(The antibacterial effects are not produced when the surface is unclean.)

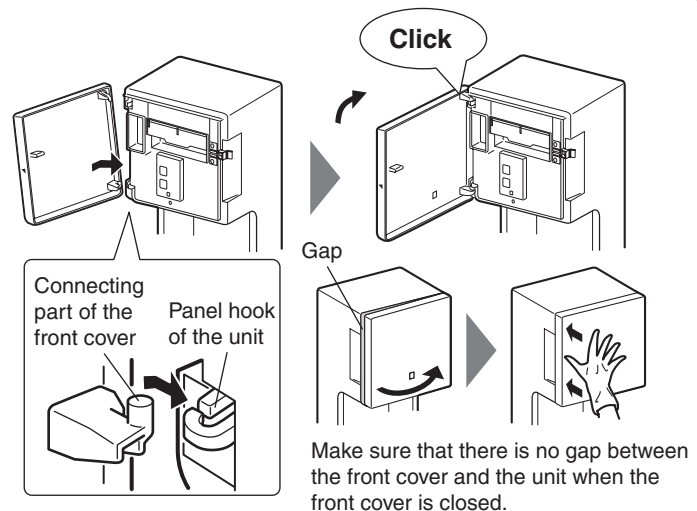


### Precautions for when opening/closing the front cover

If the front cover comes off, please reattach it with the following procedures.

※ It is designed to come off in order to prevent damage if it is opened too wide.

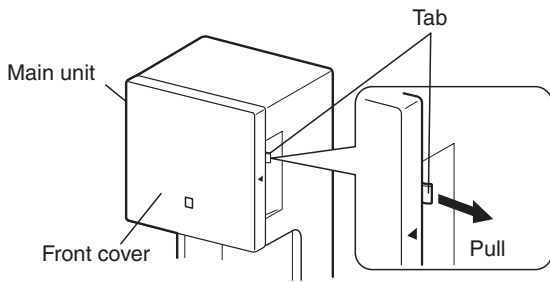
- 1 Press the bottom connecting part of the removed front cover into the bottom panel hook of the unit.**
- 2 Press the top connecting part of the front cover into the top panel hook of the unit.**
- 3 Check that the front cover is fitted securely.**



# Maintenance - Continuation

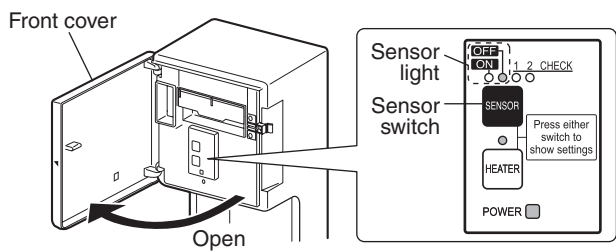
## 1 Turning the sensor off before maintenance

**1 Pull the tab and open the front cover.**



**2 Open the cover and press the sensor switch.**

- The sensor light "OFF" is lit.



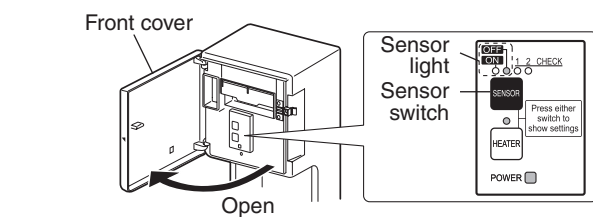
**3 Perform cleaning.**

- Refer to ② to ④ below.

**4 After cleaning, turn the sensor switch "ON".**

- The sensor light "ON" is lit.

## 2 Cleaning the unit exterior and hand drying area



**1 Pull the tab, open the front cover and turn the sensor switch "OFF".**

- The sensor light "OFF" is lit.
- Refer to "How to open/close the front cover" on page 4.

**2 Wipe the unit exterior, the inside of the front cover, and the hand drying area with a damp piece of cloth.**

- When it is unclean, wipe it with a piece of damp cloth that has been soaked in neutral detergent, thoroughly remove the remaining neutral detergent and wipe it with a piece of dry cloth.
- Clean the sensor area.

※ The sensor may lose its sensitivity and malfunction if the transparent surface inside the hand drying area is covered with a white-colored substance. Please clean it once a week.

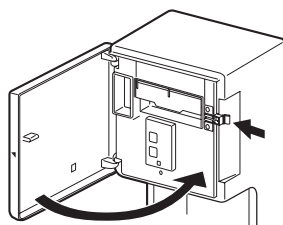
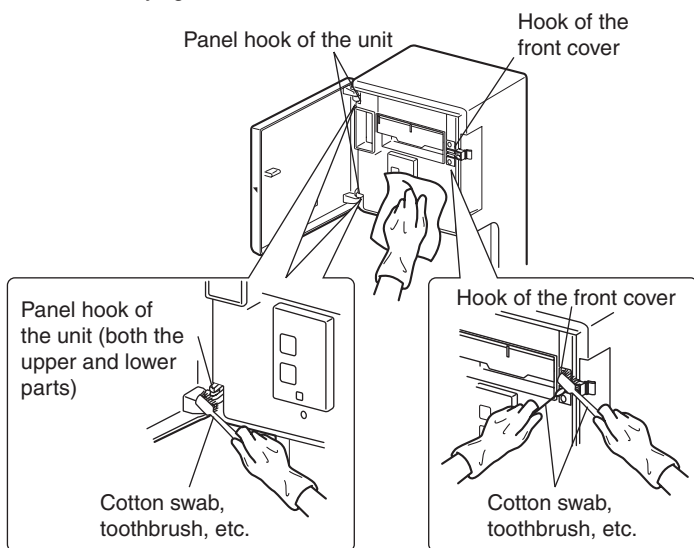
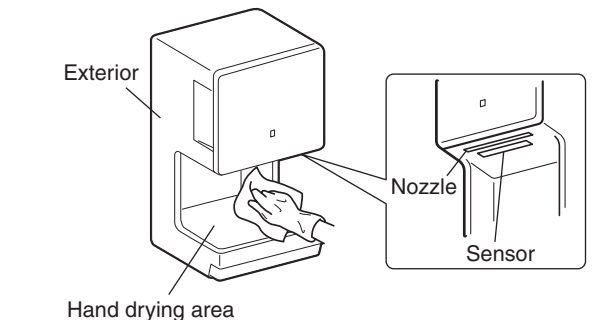
**3 Clean the dust off of the hook of the front cover with a commercially available toothbrush or cotton swab.**

**NOTE**

- The front cover is designed to come off in order to prevent damage if it is opened too wide. If it comes off, please reattach it while referring to "Precautions for when opening/closing the front cover" (Page 4).

**4 Turn the sensor switch "ON" and close the front cover so that there is no gap and push the tab.**

- The sensor light "ON" is lit.



### Caution

- Water may enter the unit and cause short circuits, electric shocks or damage if the front cover is left open.

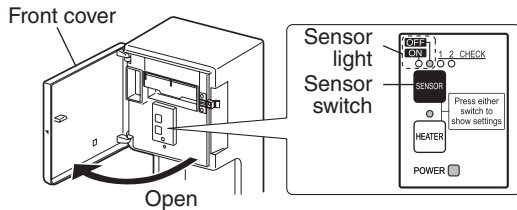


## Maintenance - Continuation

### 3 Cleaning the air filter Around once a week

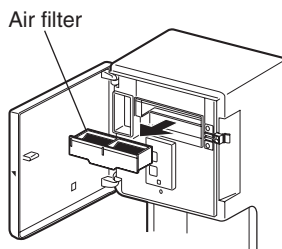
**Caution**

- A dirty air filter will shorten the working life of the motor and heater and decrease the drying performance due to insufficient air volume and air speed and bacteria can grow in the filter area due to dust deposits.

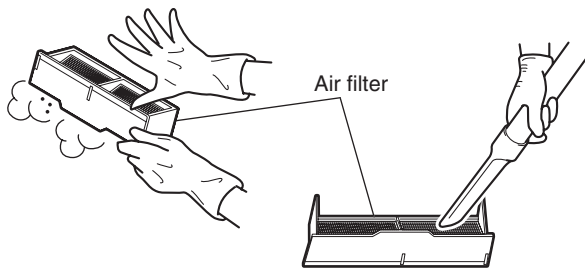


#### 1 Pull the tab, open the front cover and turn the sensor switch "OFF".

- The sensor light "OFF" is lit.



#### 2 Remove the air filter.



#### 3 Clean the air filter.

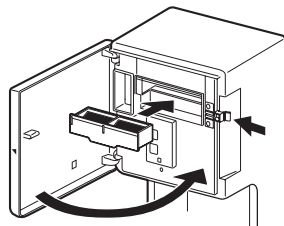
- Tap it lightly or vacuum off the dust.
- Wipe with lukewarm or cold water if it is extremely unclean.

**NOTE**

- After washing the air filter with water, dry it thoroughly.

**Caution**

- Never dry the air filter with a heat source such as a hair dryer.



#### 4 Reattach the air filter.

- Make sure that the air filter is fitted properly. (Dirt and dust may get into the unit and shorten its working life if the air filter is out of position.)

**Caution**

- Water may enter the unit and cause short circuits, electric shocks or damage if the front cover is left open.

#### 5 Turn the sensor switch "ON" and close the front cover so that there is no gap and push the tab.

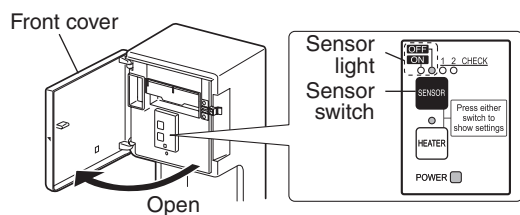
- The sensor light "ON" is lit.

## Maintenance - Continuation

### 4 Emptying and cleaning the drain tank

Before it fills up (at least once a week)

- Empty the water in the drain tank at least once a week before the drain water exceeds the full line.
- If the drain water is left inside, it can cause foul odors or the water can spill onto the floor and tarnish it.



#### 1 Pull the tab, open the front cover and turn the sensor switch "OFF".

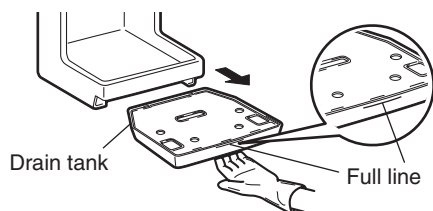
- The sensor light "OFF" is lit.
- Refer to "How to open/close the front cover" on page 4.

#### 2 Remove the drain tank while keeping it upright.

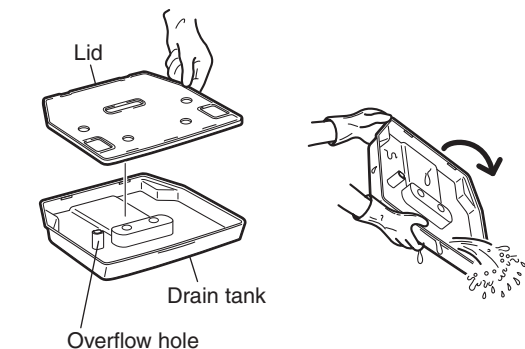
- Keep it upright when carrying it so that the drain water does not spill.

#### Caution

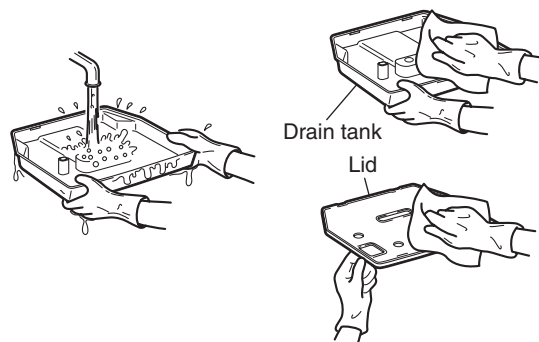
- If it is used after the full line has been exceeded, please be careful of water spilling out of the overflow hole. (The full line is reached at 0.6L.)



#### 3 Open the lid and empty out the drain water.

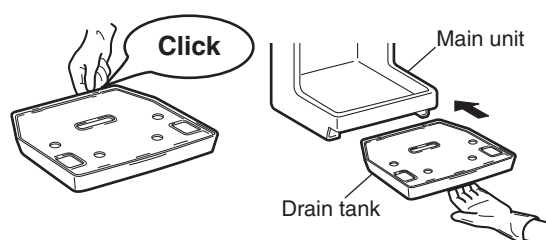


#### 4 Wash the drain tank and lid, and wipe them thoroughly.



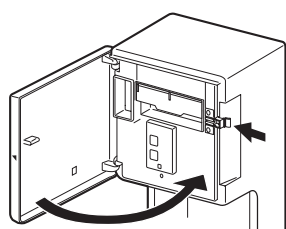
#### 5 Put the lid back on the drain tank and reattach it to the main unit.

- Press the lid of the drain tank down using the tabs until they make clicking sounds, and make sure that it is fitted properly.
- Push the drain tank all the way into to the main unit and make sure that it is fitted properly.



#### 6 Turn the sensor switch "ON" and close the front cover so that there is no gap and push the tab.

- The sensor light "ON" is lit.



#### Caution

- Water may enter the unit and cause short circuits, electric shocks or damage if the front cover is left open.

# ( Trouble shooting )

Implement the inspections and procedures below in the following cases.

In such cases	Inspections	Procedures
<b>No air blows even if hands are inserted.</b>	Are any lights in the display on? Has a power blackout occurred?	<ul style="list-style-type: none"> <li>● Turn on the ground fault circuit interrupter at the branch circuit.</li> <li>● Turn the sensor switch "ON".</li> </ul>
	Are you putting your hands in all the way?	
<b>Air does not stop.</b>	Was the sensor switch turned on while your hands or an object was inside the hand drying area? Is the sensor blocked by dirt or dust?	<ul style="list-style-type: none"> <li>● Remove any foreign substances or dirt after turning the sensor switch "OFF". Wait for at least 1 minute after turning the sensor switch "OFF", and then turn it back "ON" again.</li> </ul>
	Is the sensor in the hand drying area unclean?	
<b>Stops operating during hand drying.</b>	Has the dryer been used continually for more than 40 seconds? Are any lights flashing?	<ul style="list-style-type: none"> <li>● If the hand dryer is used continually for more than 40 seconds, the power light flashes and the dryer automatically stops. Remove your hands and then re-insert them.</li> </ul>
<b>The air is cold. Air does not warm up.</b>	The heater lamp is off.	<ul style="list-style-type: none"> <li>● Contact the dealer about any changes to the settings. Costs are as agreed with the dealer.</li> </ul>
	Air conditioning is not working.	<ul style="list-style-type: none"> <li>● The air may not feel warm if the room temperature is less than 68°F (20°C).</li> </ul>
	Is the room temperature too high?	<ul style="list-style-type: none"> <li>● If the room temperature is above 86°F (30°C), the heater will stop working to prevent the temperature from rising too high.</li> </ul>
<b>The power light does not light up even when the power is switched on.</b>	Was there a power blackout? Is the ground fault circuit interrupter "OFF"?	<ul style="list-style-type: none"> <li>● Turn the ground fault circuit interrupter "ON" at the branch circuit and then turn the power switch "ON".</li> </ul>
<b>The power light is flashing.</b>	This may flash if there is a malfunction in the power supply.	<ul style="list-style-type: none"> <li>● Turn the power off, check that all of the lights on the display section are off and then wait for 1 minute before the power back on.</li> </ul>
	Has the dryer been used continually for more than 40 seconds? Are any lights flashing?	<ul style="list-style-type: none"> <li>● If the hand dryer is used continually for more than 40 seconds, the power light flashes and the dryer automatically stops. Remove your hands and then re-insert them.</li> </ul>
<b>The sensor light and heater light do not light up.</b>	It turns off 10 seconds after the sensor switch or heater switch are controlled to save energy.	<ul style="list-style-type: none"> <li>● When the sensor switch or heater switch are pressed, the light turn back on in the state where the settings have been made.</li> </ul>
<b>Turning the heater off.</b>	The heater can be turned off.	<ul style="list-style-type: none"> <li>● Please refer to "Turning the heater on" (Page 6) while turning the heater off.</li> </ul>
<b>The front cover has come off.</b>	Has the front cover been opened too wide?	<ul style="list-style-type: none"> <li>● The front cover is designed to come off in order to prevent damage to the main unit if it is opened too wide. Please reattach it while referring to "Precautions for when opening/closing the front cover" (Pages 4 and 7).</li> </ul>
<p>If the above procedures do not work, turn off the power and the ground fault circuit interrupter at the branch circuit and have your dealer inspect and if necessary, repair the unit. (Costs are as agreed with the dealer.)</p>		

# ( Specifications )

Model	Voltage	Frequency	Heater	Power Input (W)	Current (A)	Weight (kg)	Dimensions (W × D × H)
JT-MC106G-W-NA	Single-phase 120 Vac	60Hz	ON	890	7.6	6	9 7/8 × 7 × 18 7/8 (in.) (250 × 170 × 480 (mm))
			OFF	600	5.2		

• The capacity of the drain tank is 0.6 L.

## ■ Settings and drying times guide

Drying times guide *	Noise
(approx.) 13 seconds	(approx.) 64dB

※ Drying times are based on Mitsubishi measurements. (50mg of water per hand)

### Working life of the motor/heater

- The working life of the motor and heater is 7 years when used 200 times per day.  
The working life may be shortened if the unit is used in a location where the power supply voltage is high or when the operation times per user are long.
- No air blows as the motor dies. (There may be odors or noise when the motor dies, but this does not indicate a malfunction.)  
The air becomes cold when the heater dies. Please contact the dealer for a replacement when the heater dies. (subject to fees)

**MITSUBISHI ELECTRIC CORPORATION**

Tokyo Building 2-7-3, Marunouchi, Chiyoda-ku, Tokyo 100-8310, Japan