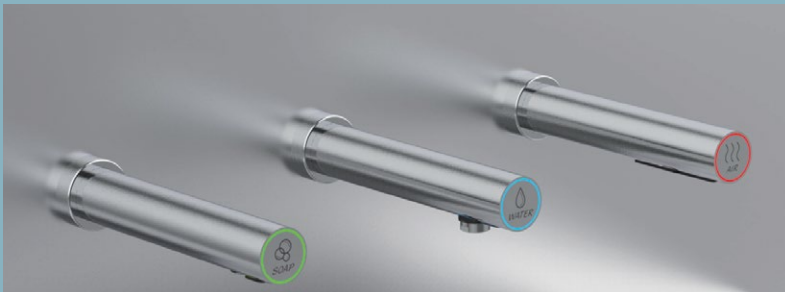
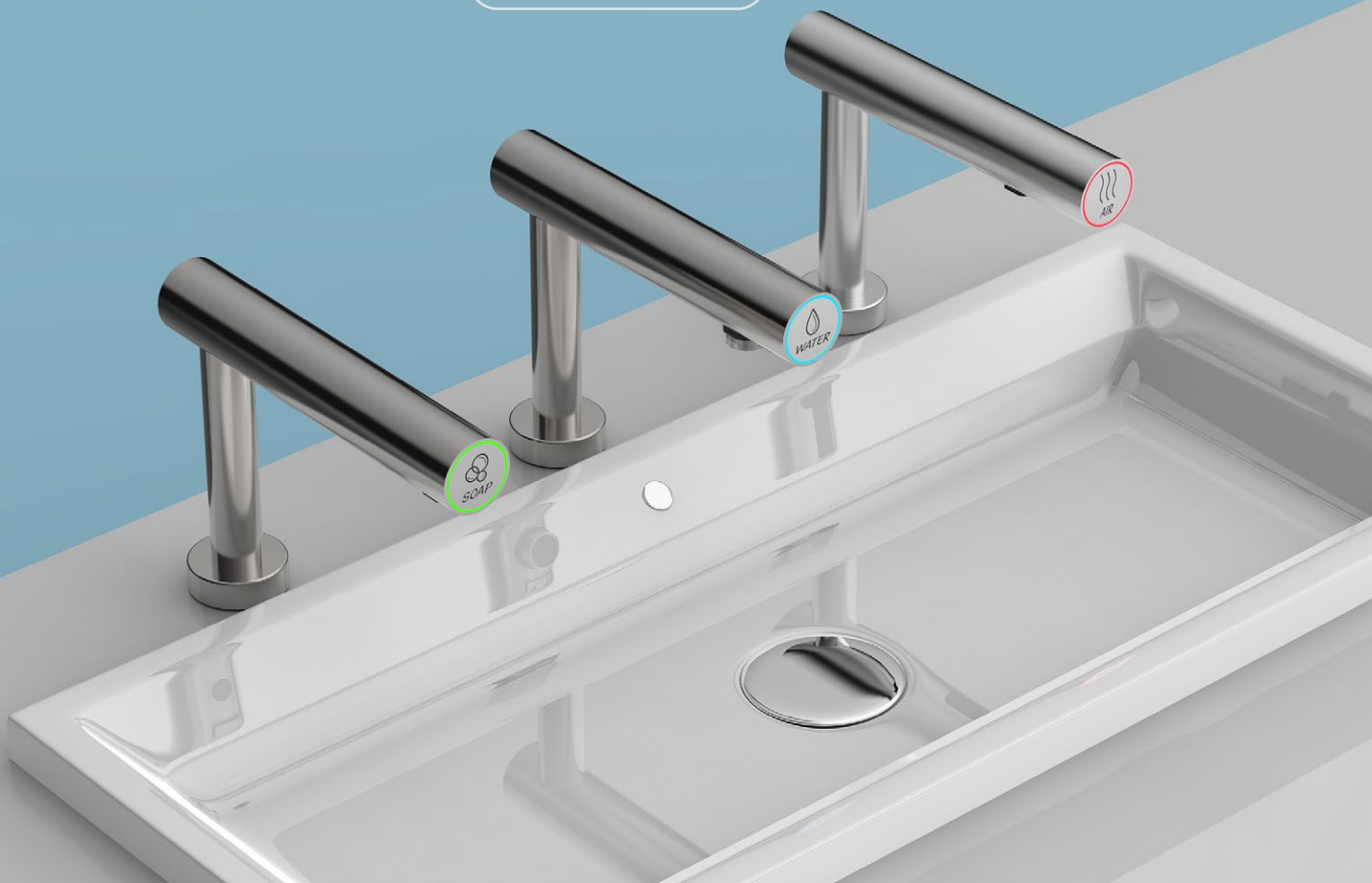


TOUCHFREE SOPHISTICATION

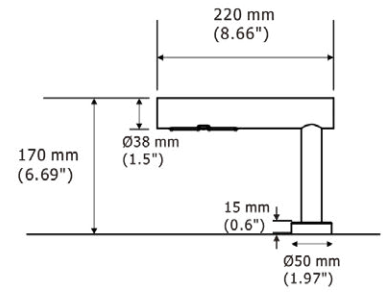
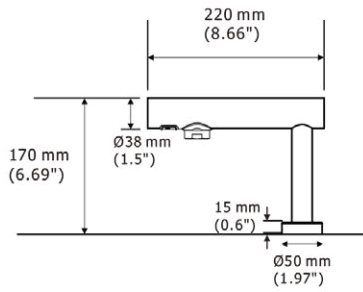
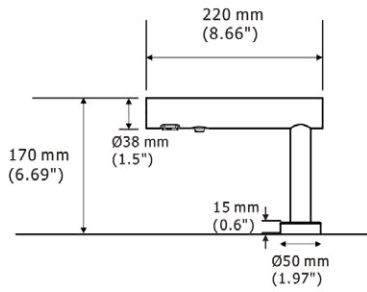
Introducing the EcoTap Trio
FOAM SOAP | FAUCET | HAND DRYER

PALMER
FIXTURE



**WALL MOUNT OPTION
ALSO AVAILABLE!**

SPECIAL ORDER



TECHNICAL SPECIFICATIONS: FOAM SOAP DISPENSER

Material: Stainless Steel	Power Source: AC
Sensing Range: 4.72" ± .78", Adjustable	Capacity: 1500 mL Foam Soap
Pump Life Cycle: 100K	Mechanism Life Cycle: 500K
Drip Proof: IP35 ▲	Mounting: Surface Spout
Model: SD1500-09 (liquid available for special order)	Dimensions: 1.97" W x 6.69" H x 8.66" D (spout)
Wall Mount (Special Order): SD1500-09W	

TECHNICAL SPECIFICATIONS: FAUCET

Material: Stainless Steel	Power Source: AC
Sensing Range: 4.72" ± .78", Adjustable	Auto Shut-Off: 1 Minute
Operating Water Pressure: 10~100 PSI	Flowing Volume: .05-1 L/Minute
Drip Proof: IP35 ▲	Mounting: Surface Spout
Model: AF0304-09	Dimensions: 1.97" W x 6.69" H x 8.66" D (spout)
Wall Mount (Special Order): AF0304-09W	

TECHNICAL SPECIFICATIONS: HAND DRYER

Material: Stainless Steel	Motor Type: Adjustable brush type, dual ball bearings
Operating Airflow: 16,535-19,882 LFM, Adjustable	Sound Level: MIN 68.5dB to 70.5dB MAX @1m
Thermal Protection: Thermostat Shuts Off 203°F (95°C) Thermal Cut-Off at 185°F (85°C)	Air Output Temperature: 122°F (57°C) Ambient Temperature 77°F (25°C)
Isolation: Class 1	Drip Proof: IP35 ▲
Watts: 500W	RPM: 22,000-29,000, Adjustable
Model, Voltage & Amps:	Mounting: Surface Spout with Undermount Motor
HD0935-09 110/120 Volts 7.6-8.4 Amps	Dimensions: 1.97" W x 6.69" H x 8.66" D (spout)
HD0936-09 220/240 Volts 3.8-4.2 Amps (special order)	12.05" W x 7.60" H x 5.85" D (motor)
Wall Mount (Special Order): HD0935-09W	

Recommended Distance Between Units: 7.09" (180mm)

Phone: 920.884.8698
Toll-Free: 800.558.8678
Fax: 920.884.8699
Email: info@palmerfixture.com



Palmer Fixture
PO BOX 10887
Green Bay, WI 54307
Website: www.palmerfixture.com

V11.2021